



Harewood Hill, Theydon Bois, CM16

BUTLER & STAG



SOLD IN 24 HOURS
Recently decorated and
well maintained semi-
detached family home
in a premier location.



Freehold

- Semi Detached Family Home
- Three/ Four Bedrooms
- Two/ Three Receptions
- Well Presented
- Off Street Parking/Garage
- Study/Summer House
- Village Location

This delightful character house has been well maintained and cared for by the current owners and is situated in the highly sought after village location of Theydon Bois.

Accommodation is arranged over two floors comprising of a spacious lounge/dining area, kitchen/breakfast area which looks out onto the stunning rear garden, downstairs WC.

The first floor hosts three bedrooms and a family bathroom

Further benefits include a garage suitable for secure parking or storage and loft space with potential to convert subject to the usual planning consents.

The secluded rear garden extends to 95' approx with a North facing aspect with a summer house/study, the front garden has a driveway perfect for off street parking.

Harewood Hill is a wide tree lined residential turning in this ever popular village. Local amenities include a good range of shops, pubs, restaurants and leisure facilities. There are several well regarded state and private schools within easy reach and good transport links into London.

Theydon Bois station (Central Line) is a short walk and provides swift access into central London.



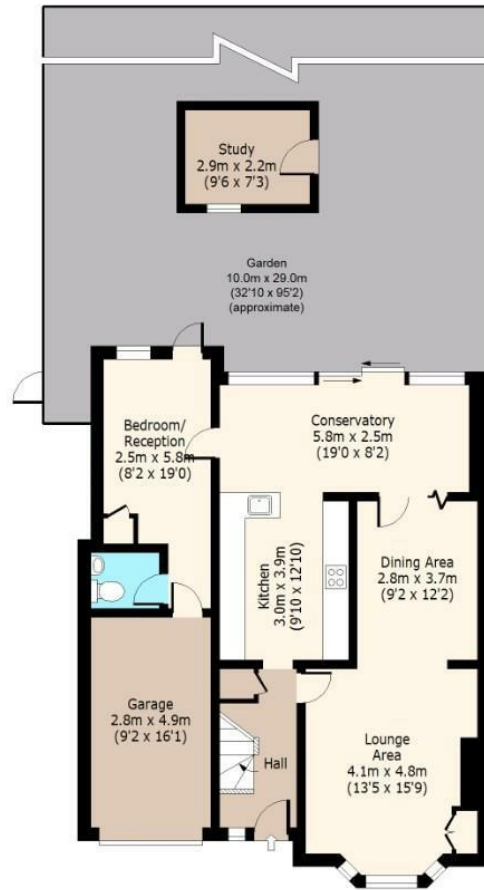


Harewood Hill



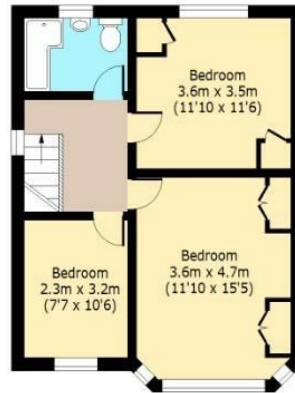
Ground Floor

Approx. 80.54 Sq. meters (867 Sq. feet)
(Excluding Garage)



First Floor

Approx. 50.53 Sq. meters (544 Sq. feet)



Total area(Including Garage): approx. 144.79 Sq. meters (1559 Sq. feet)
Total area(Excluding Garage): approx. 131.07 Sq. meters (1411 Sq. feet)
For illustration purposes only - not to scale
www.lpaplus.com

BUTLER & STAG

☎ 01992 667666

🏠 4 Forest Drive, Theydon Bois, Essex, CM16 7EY

✉ theydon@butlerandstag.com

www.butlerandstag.uk

IMPORTANT NOTICE - These particulars have been prepared in good faith and they are not intended to constitute part of an offer or contract. We have not performed a structural survey on this property and the services, appliances an specific fittings have not been tested. All photographs, measurements, floor plans and distances referred to are given as a guide and should not be relied upon.